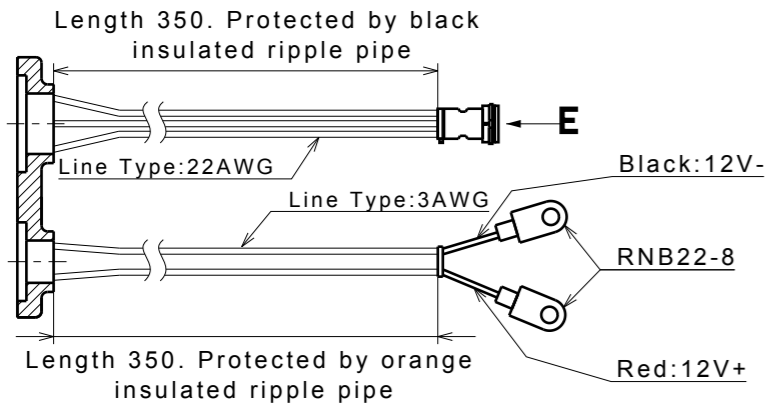
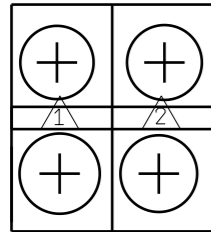


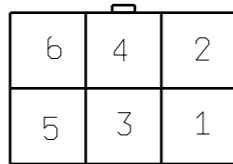
Drawing No. of customer:



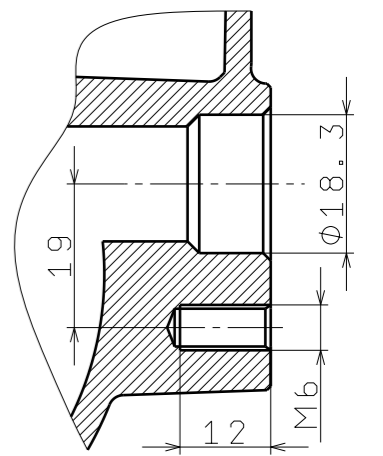
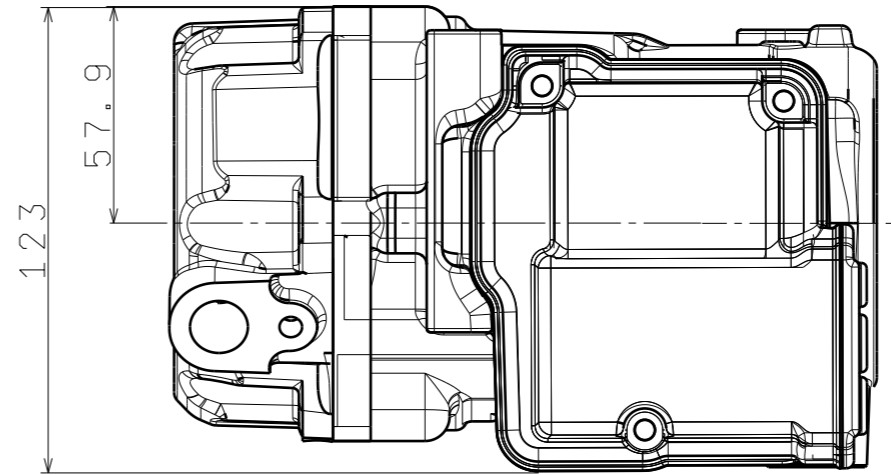
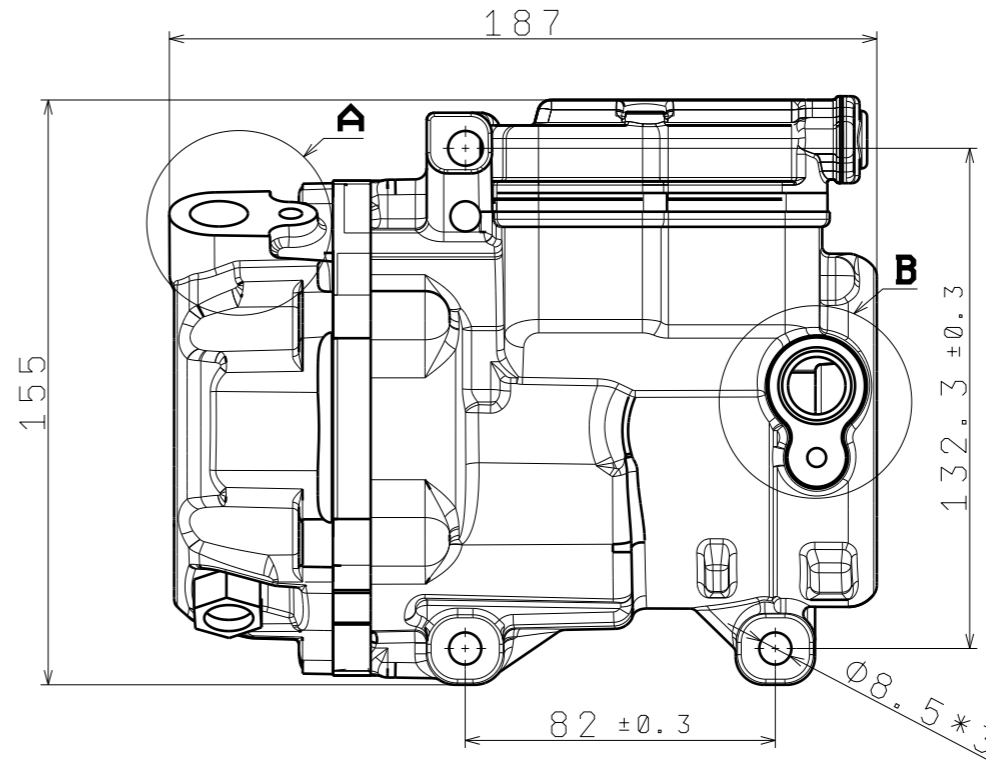
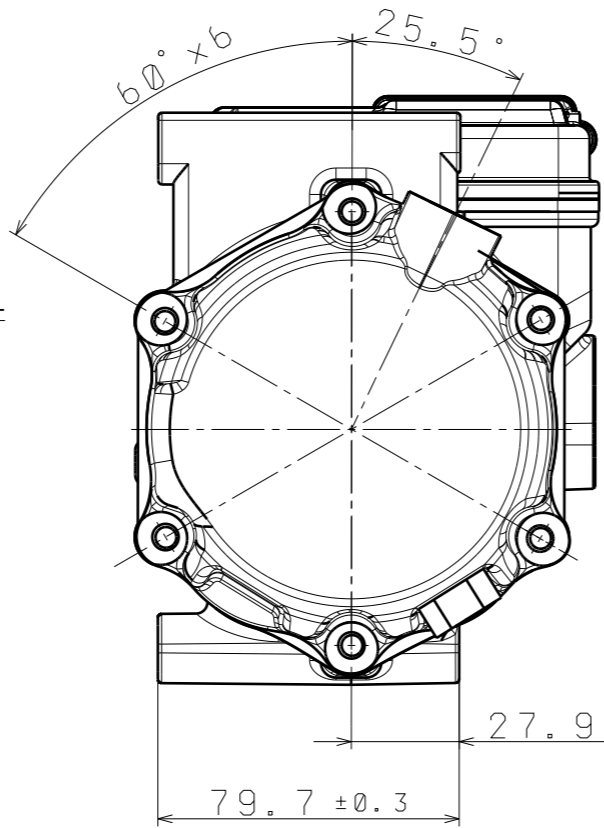
Power connector



Signal connector

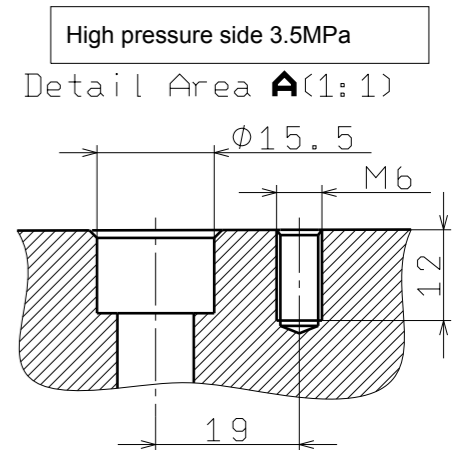


Definition of external port				
Part name	Pin	Color	Definition of port	Name of Matching part
TD100-25.0-2*2P	1	Red	12V DC Positive pole input voltage 10V~16V DC	RNB22-8
	2	Black	12V DC Negative pole input	
DJ7061Y-2-11	1	Red	Speed: 3500R/Min Connect Pin 1 and Pin 2	DJ7061Y-2-21
	2	Black	GND	
	3	Yellow	Speed: 5000R/Min Connect Pin 3 and Pin 2	
	4	Green	Speed: 4250R/Min Connect Pin 4 and Pin 2	
	5	NC		
	6	NC		



Detail Area B (1:1)

Low pressure side 1.6MPa



Detail Area A (1:1)

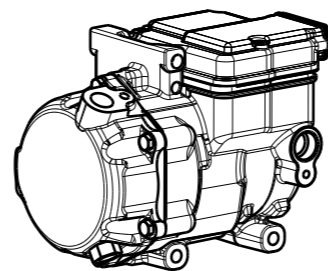
High pressure side 3.5MPa

Performance parameter					
Rpm	2000	3000	4000	5000	6000
Cooling capacity(KW)	1.19	1.85	2.54	3.24	3.94
Consuming watt(KW)	0.63	0.91	1.20	1.52	1.91
COP(Avg)	1.86	2.01	2.10	2.12	2.06
Test condition	Environment 35°C, Suction 18.5°C, Liquid temp. entering expansion valve 43.5°C, Condenser 43.5°C, Evaporation -6.5°C.				

Information	
Displacement	18CC
Refrigerant	R404a
Refrigerant oil	RL68H/100ml
Rated voltage	12V
Speed range	3500~5000rpm
Size	187*123*155mm

Note:

- 1.The total leakage of the compressor is not greater than 5g/year.
- 2.The noise is not greater than 76dB in rated speed.
- 3.Insulation resistance must be greater than 20MΩ .
- 4.The LOGO can be changed accord to the client request.
- 5.The tolerance of None remarked dimensions may be accordance with GB1804-m.
- 6.The performance of the compressor will be accordance with the GB/T 22068-2018 other than indicated already.



Equiaxial view

Remark	Number	Region	Doc. change No	Signature	Date
Designer			Standard		
Drawing			Audit		
Technology			Approved		

Customer:

Phase remark	Mass	Scale	DWG.No. of customer:
A	4.8	1:2	DWG.NO.:
Pages.	1/1		Name of component: Compressor 12Volts R404a

